

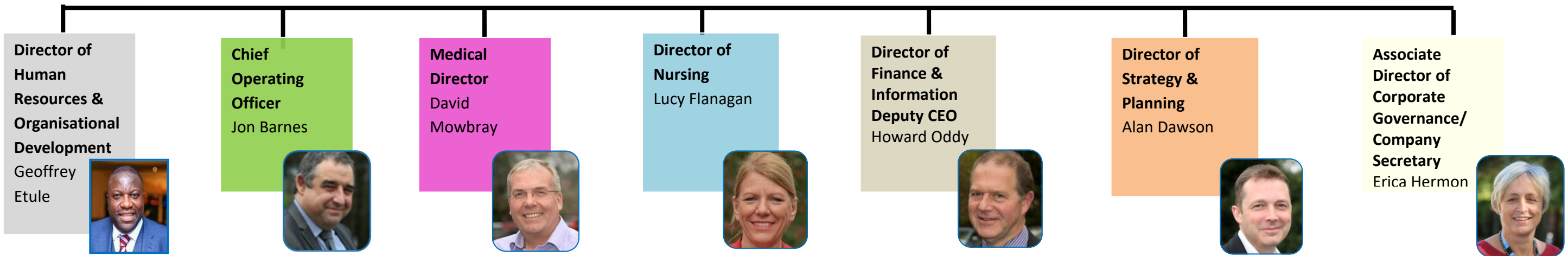
Corporate structure chart

Executive Team

Chief Executive
Glen Burley



Managing Director
Jane Ives



Director of Human Resources & Organisational Development
Geoffrey Etule

Chief Operating Officer
Jon Barnes

Medical Director
David Mowbray

Director of Nursing
Lucy Flanagan

Director of Finance & Information Deputy CEO
Howard Oddy

Director of Strategy & Planning
Alan Dawson

Associate Director of Corporate Governance/ Company Secretary
Erica Hermon

- Operational HR (HR business partners, temporary staffing, medical staffing, resourcing)
- Occupational health
- Education and development
- Workforce information, systems and payroll

- Surgical division
- Medical division
- Integrated care division
- Clinical support services division
- Emergency planning

- Quality and safety
- All medical staff within the Trust
- Responsible officer
- Caldicott Guardian
- Chair of E-prescribing and Medicines Administration Project (EPMA)

- Quality and safety
- Safeguarding children and adults
- Looked after children
- Patient experience
- Chaplaincy
- Infection prevention and control

- Finance
- Information
- Procurement
- Information governance
- EPR/data quality
- IT

- Business planning and development
- Service improvement
- Estates
- Capital planning
- PFI contract

- Corporate governance
- Executive and Committee support
- Health and safety
- Claims and inquests
- Legal